

THE STUDENT'S IT PRESS



IT KALEIDOSCOPE

FUTURE OF THE GLOBAL: AI

Student In Charge
Shyam, Ashmita & Akshat

Faculty In Charge
Dr. Priyanka Gandhi

Program In Charge
Dr. Praveen Arora

Introduction:

With the introduction of the internet, many new things are introduced to the world among which one is Artificial Intelligence popularly known as AI. Artificial Intelligence (AI) is defined as the simulation of human intelligence processes by machines, especially computer systems. Every technology is introduced to make the work of humans easier and AI if gets a chance to develop can change the face of the world.

AI is one of the most advanced technology introduced to the world till date because it can think, process and can give the required output little bit similar to humans. Some of great examples of AI are facial recognition, map navigation, etc.

Working of AI:

The aspect of AI programming mainly focus on grabbing of data and creation of rules to turn that acquired data into actionable information. These rules are known as algorithms that provide accessing the device by step by step instructions to complete a particular task.

Often the vendors who scramble information about AI refer to a term called machine learning which means to get specialization in hardware and software to create algorithms.

Importance of AI in our daily lives:

Today artificial intelligence has become a part of our daily life. From starting of the day to the end, our everyday routine includes AI. For example in morning we unlock our phone using facial recognition, then during work send emails and browse social media and at the end of the day tell Apple Siri or Amazon Alexa to play some music and to switch off the lights. Every part of your daily routine includes AI.

AI is making things smooth and efficient. Many companies are now introducing AI in their firms to make their employee's work easier for example in 2017, Google's CEO, Sundar Pichai, announced that Google would become an "AI first" company.

Advantages and disadvantages of AI:

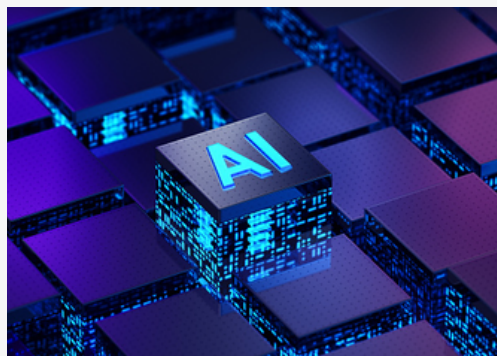
Every coin has two faces similarly AI has advantages as well as disadvantages. But, as AI is a new technology and is not developed and researched much hence, the number of advantages and disadvantages are few.

Advantages:

1. Getting better at jobs which detail-oriented.
2. Reducing time for heavy data tasks.
3. Delivering consistent results.

Disadvantages :

1. It is expensive
2. Requires technical expertise
3. Limited qualified workers to construct tools of AI



Ai takeover:

there is no question that AI(Artificial Intelligence) is growing at a very rapid rate and is will play a significant role in upcoming future society.

The potential benefits and dangers of artificial intelligence are still being debated, but there is no doubt that it will play an increasing role in our lives and economy. AI is viewed by some as a potential savior, able to accelerate economic growth and Human labor will be increasingly automated, which could result in job losses and job loss. Regardless of the fears or expectations, AI is here to stay. Does Artificial Intelligence have the potential to take over the world?

Some jobs are being replaced by artificial intelligence, and this trend will continue. AI is expected to disrupt hiring across a range of industries, from healthcare to agriculture and manufacturing. However, AI is expected to increase demand for workers, especially in robotics and software engineering.

JOBS AI CAN'T REPLACE

- Teachers
- Writers
- Lawyers
- Social workers
- Professionals in the medical field
- Professional therapists
- Professionals in management

The initial response I received from AI when I questioned if it will take over the world was a simple "No."

The message "There is no evidence to support this assertion" appears on the second attempt.

Right now, I wholeheartedly concur. Even if AI develops to levels that humans cannot completely comprehend, it will still be a powerful instrument for enhancing human potential and enhancing living.

AI will provide people the chance to accomplish tasks that would otherwise be unfeasible or take too much time.

For instance, online travel agencies like Expedia and Orbitz have made it possible for certain people to travel the world affordably and conveniently. But there wouldn't be a need for any human middlemen if AI could produce an accurate virtual tour of any place on earth.



Mehak Mittal
MCA 1st Year



Sarthak Rawat
MCA 2nd Year

Technology in the next millennia :

Case study on baby womb technology

Technology has been a part of our lives since its inception. It can be seen in every aspect of our lives: from how we communicate to how we commute. In this article, we will be looking at how technology is on the horizon for future generations: specifically, the potential for baby womb technology.

The world's first artificial womb facility is a revolutionary medical technology that allows preterm babies to continue their development outside of the mother's womb. This technology has the potential to greatly improve the survival rate and long-term health outcomes of preterm babies, who are at higher risk of complications and death due to their premature birth.

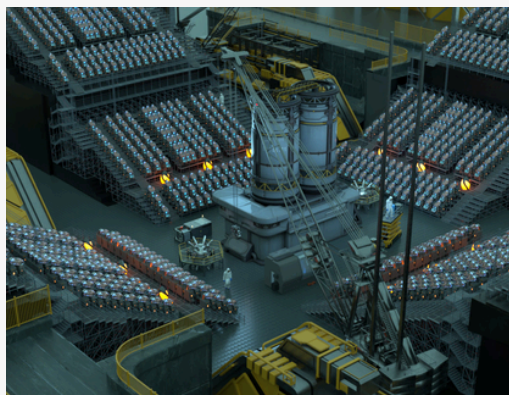
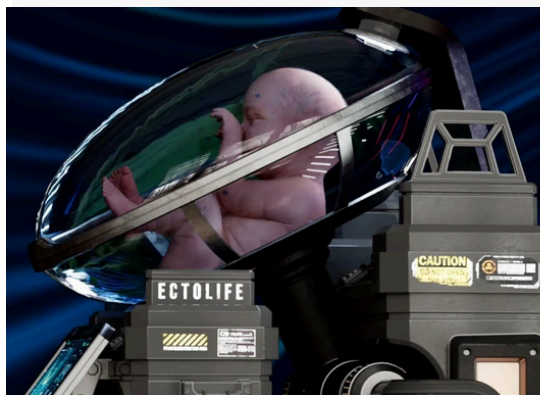
An artificial womb, also known as an extra-uterine support system, is a device that simulates the environment of the mother's womb. It consists of a fluid-filled bag that supports the baby's body, a system for oxygenation and nutrition, and a device for removing waste. The baby is placed in the artificial womb and connected to the necessary systems, allowing it to continue its development as if it were still inside the mother's uterus.

One of the main advantages of the artificial womb facility is that it allows preterm babies to continue their development in a safer and more controlled environment. Preterm babies are often placed in incubators, which can be noisy and stressful for the baby. In contrast, the artificial womb provides a quiet and peaceful environment that more closely resembles the womb, allowing the baby to develop more naturally.

This facility also has the potential to significantly reduce the risk of complications and long-term health issues associated with preterm birth. Preterm babies are at higher risk of respiratory distress, brain injury, and other health issues due to their premature birth. By continuing their development in an artificial womb, these risks may be reduced, improving the chances of a healthy outcome for the baby.

While the artificial womb facility is still in the early stages of development, it represents a major advancement in medical technology that has the potential to greatly improve the lives of preterm babies and their families. It is an exciting development that holds promise for the future of neonatal care.

Still sounds like science fiction right ? But this is the revolution.... And this is happening !



The future of the planet and it's humans

Future of the globe: AI(Artificial Intelligence)

Artificial intelligence not only includes a vivid range of technologies that advance computers and machines but in modern times can be looked at as a necessity for every human. From maps and navigation to chatbots, from facial detection and recognition in our phones to e-payments and search and recommendation algorithms, we can find artificial intelligence in every field today.

The current implication of AI

AI in our present-day life is hard to ignore because of its abundant inclusivity and availability. It can be seen in the field of healthcare and education with the digitalization of textbooks with the help of AI and in media and customer service fields which are harnessing AI too.

Near future of AI

Artificial intelligence has already set a bar after creating social humanoids like Sofia and Nadine and in the near future, it is believed that can develop truly personalized medicine for everyone where major questions are whether artificial intelligence will improve the state of the art in the field of healthcare. Dealing with the climate crisis problem will also require the help of artificial intelligence in the near future. It is also believed that artificial intelligence will play a vital role in enabling the next-generation consumer experience.

Can AI become a threat to the human species in the next hundred years?

It is firmly believed that everything interesting always has two sides. Humans fear the negative implications of AI over the next 100 years. Although artificial intelligence has many perks to offer, artificial intelligence can still become a threat if it turns sentient.

The concept of 'deep fakes' is also considered a risk by artificial intelligence in the future. Privacy violations, algorithm bias caused by bad data, market volatility, and weapons automatization are some of the risk factors in the future that can be a threat by artificial intelligence. One of the major disadvantages is the reduction in the availability of jobs in various fields because of the takeover by AI.

Conclusion

Now, as we are aware of artificial intelligence and its implications in the future then we need to understand that overuse of any technology will lead to many disadvantages so we have to cautiously and sustainably use the technology of artificial intelligence that will make the optimum perks of AI available to us and at the same time, it won't be considered as a threat to human life.



Harshit
MCA 1st Year



Bhumika Singh
MCA 1st Year

IT KALEIDOSCOPE

OUR TEAM



Dr. Praveen Arora
Program Incharge



Dr. Priyanka Gandhi
Faculty Incharge

Student Coordinator



Shyam Kumar Chadha
MCA 1st Year



Ashmita Bagla
MCA 1st Year



Akshat Sharma
MCA 2nd Year

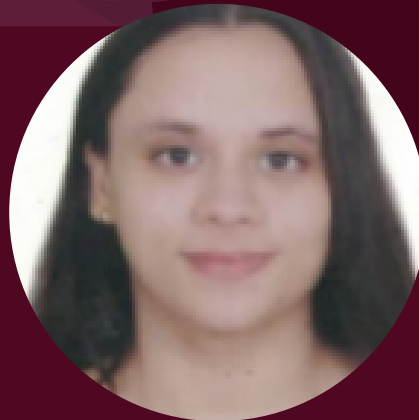
Designing team



Maharleen Kaur
MCA 1st Year



Suhail Ahmed
MCA 2nd Year



Monishka Gupta
MCA 2nd Year



Nacya Jain
MCA 1st Year